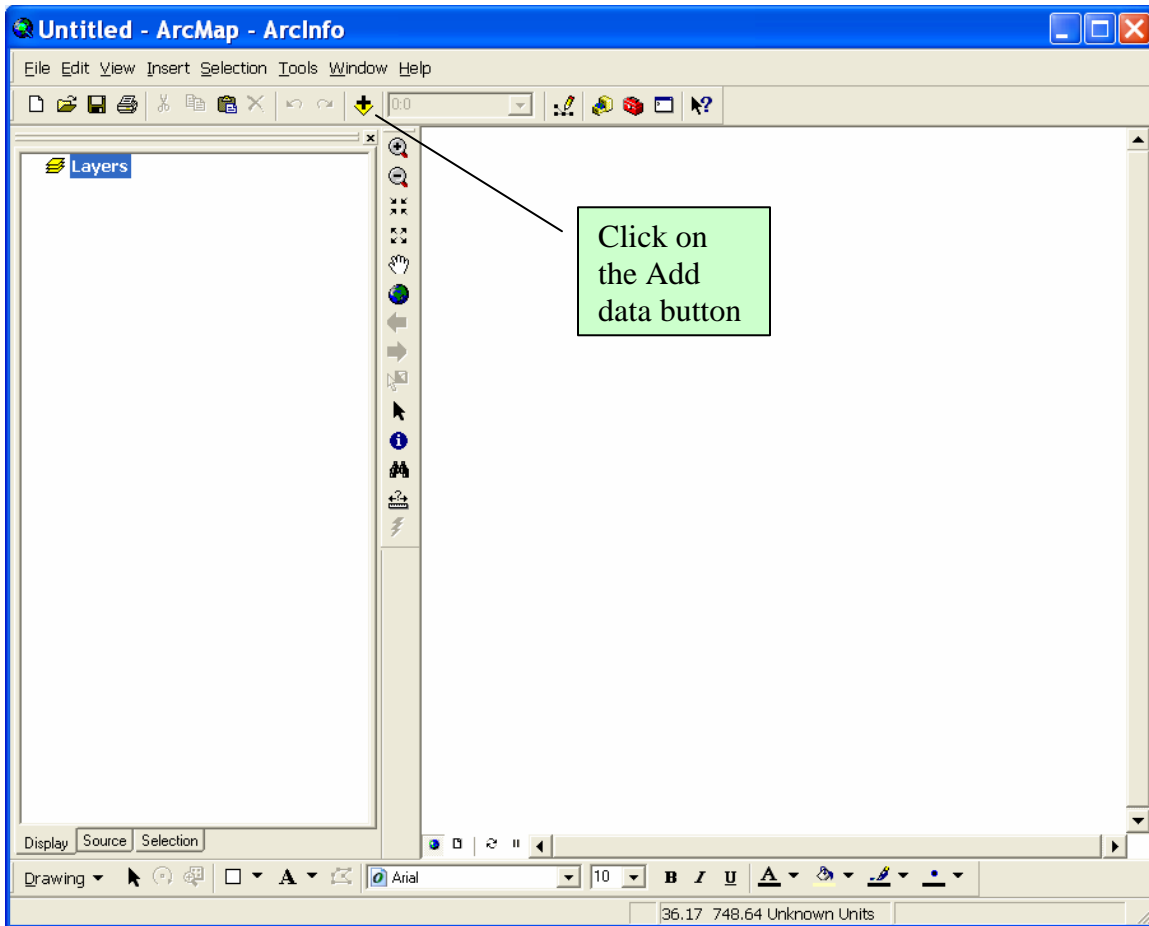
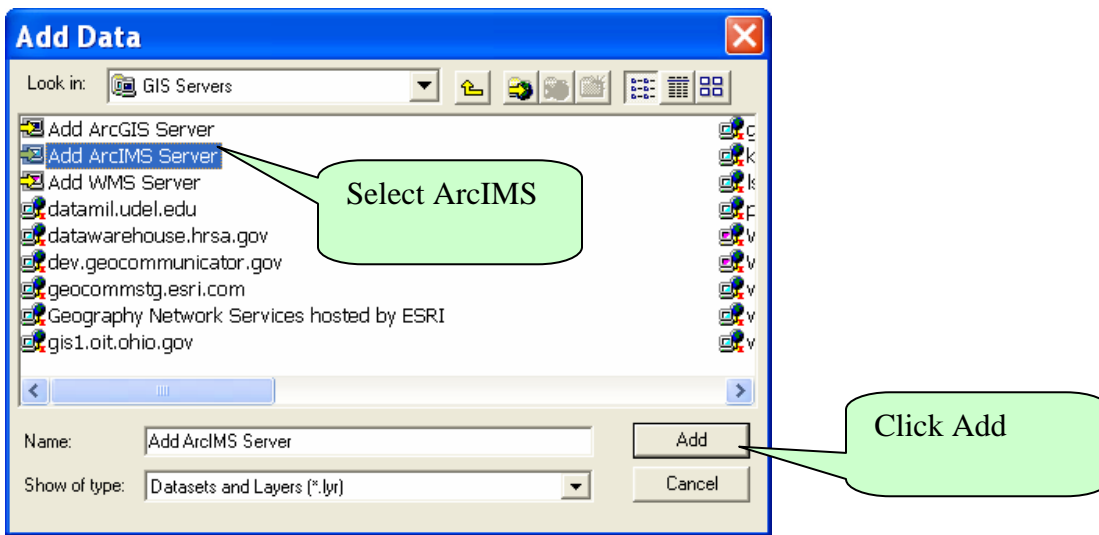


Using BLM ArcIMS and WMS map services within your ArcGIS.

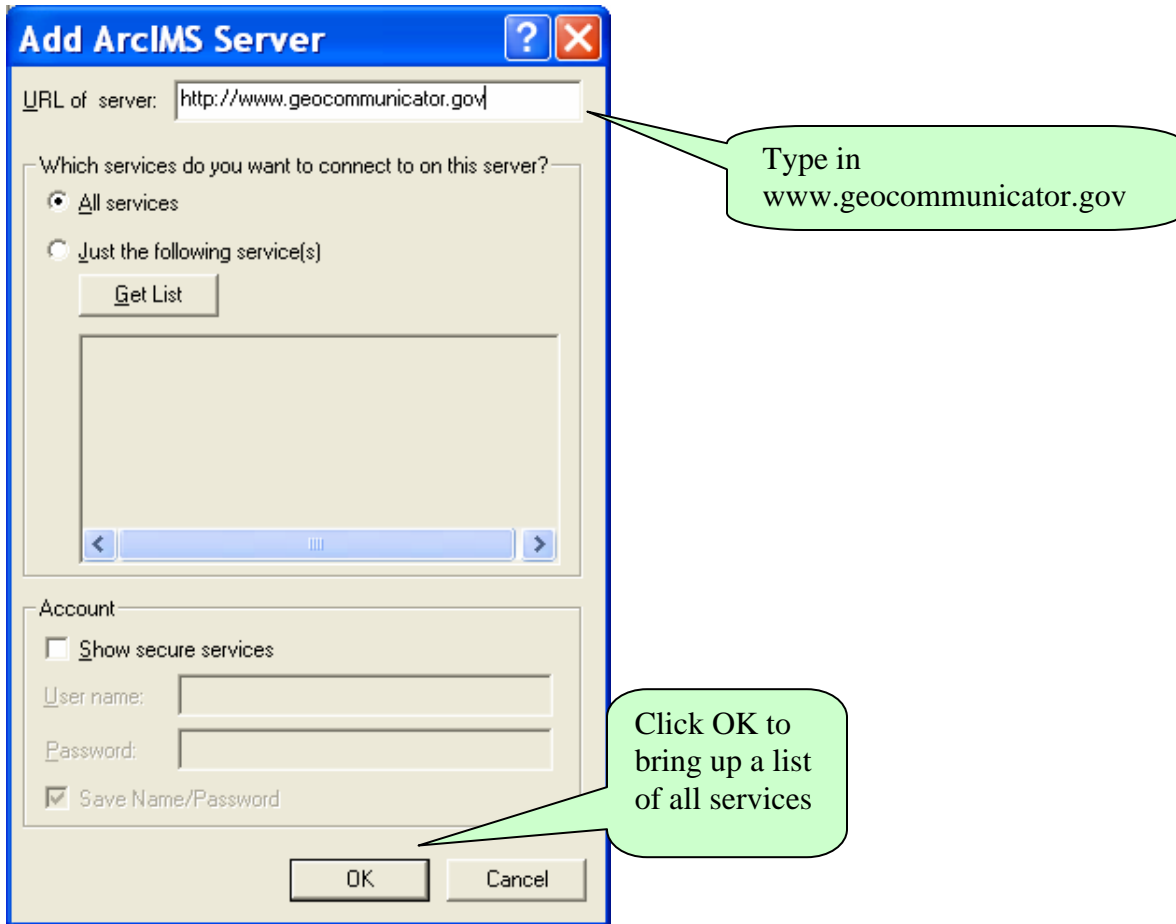
1-Bring up ArcMap



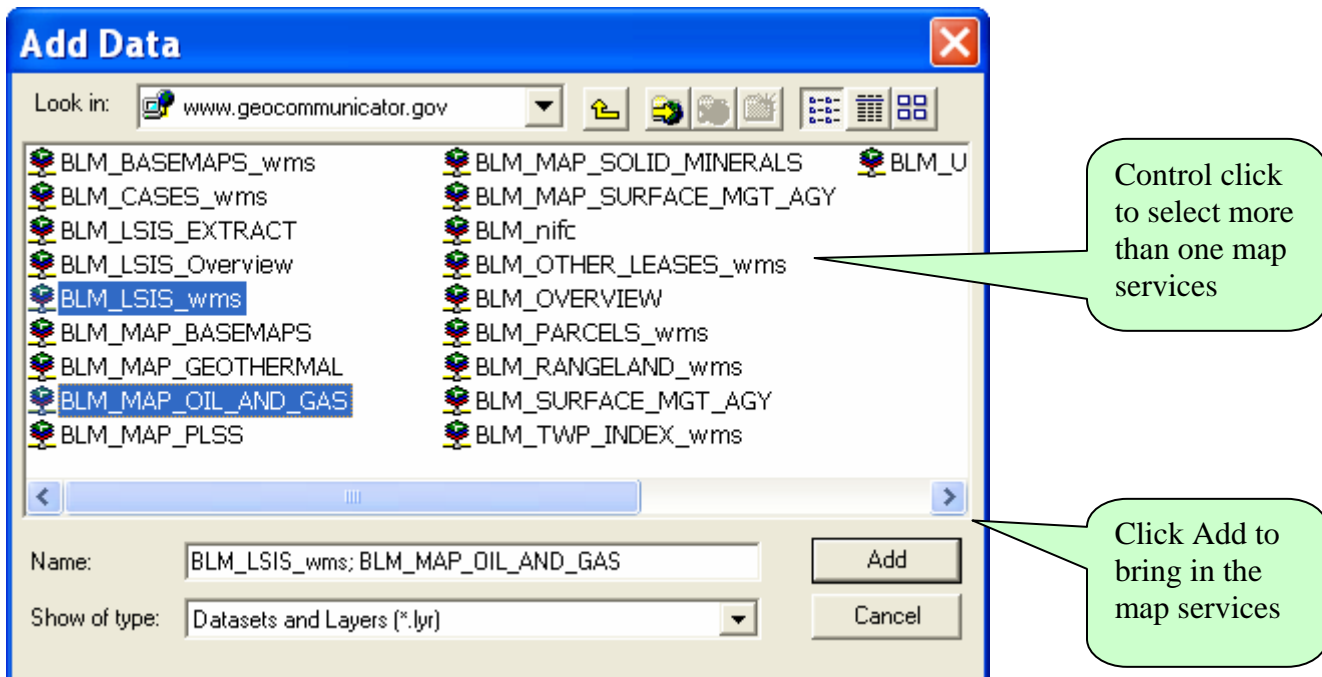
2-Add data



3-Add www.geocommunicator.gov as the URL



4-Below is a list of the available Map Services. For definitions of the map services see “Data Themes and Layers – Public” below.



Data Themes and Layers - Public

The following data themes are maintained in the National Integrated Land System (NILS) through the Survey Management (SM), Measurement Management (MM) or the Parcel Management (PM) transaction modules. The data from NILS is made available to the public for access and downloading through NILS' GeoCommunicator (www.geocommunicator.gov). Many of the themes are also available as Map Image Services that can be accessed through GIS software.

NILS' GeoCommunicator – www.geocommunicator.gov

Data available as a map service, downloadable data, and/or in a mapping application

<p>PLSS (Public Land Survey System)</p> <p>Map service: www.geocommunicator.gov Service Name: BLM_MAP_PLSS</p> <p>Downloadable from Land Survey Information Section</p>	<p>Graphic representation of PLSS including Meridians, Township, Range, Sections, subdivisions, and special surveys (not fully populated) providing the foundation for a multipurpose cadastre. Includes BLM's GCDB data and alternate source data from other agencies including the USFS. This data layer contains both survey and unsurveyed data.</p> <p>Progress is being made to fill in the missing PLSS data with additional alternate source data.</p>
<p>Land & Mineral Use Record Data (active and closed cases)</p> <p>Access to Serial Register Page and Township Geographic Reports from LR2000.</p> <p>Map service: www.geocommunicator.gov Service Name: BLM_MAP_GEOTHERMAL</p> <ul style="list-style-type: none"> • Geothermal Leases & Agreements <p>BLM_MAP_MINING_CLAIMS</p> <ul style="list-style-type: none"> • Mining Claims located to the nominal locations 	<p>Service Name Continued: BLM_MAP_OIL_AND_GAS</p> <ul style="list-style-type: none"> • Oil & Gas Leases & Agreements • Lease Sale Parcels • Oil and Gas Density and Basin Study Areas • Stipulations - For CO, MT, NM, and soon CA, OR, and WA. <p>BLM_MAP_SOLID_MINERALS</p> <ul style="list-style-type: none"> • Coal Leases • Known Leasing Areas • Logical Mining Units (coal) • Other Solid Mineral Leases, Permits, and Licenses <p>BLM_Other_Lease_wms</p> <ul style="list-style-type: none"> • Mineral Materials Disposal • Non-mineral Uses, Leases and Permits • Oil & Gas Sale Parcels for CO, WY, and NM. Access to State Office sale website and sale notice. • Rights-of-Way, Wind Energy ROW, Solar Energy ROW <p>BLM_PARCELS_wms (all)</p>
<p>Cases that Affect Land Status (CTALS)</p> <p>Access to Serial Register Page and Township Geographic Reports from LR2000.</p> <p>Map service: www.geocommunicator.gov Service Name: BLM_CASES_wms</p>	<ul style="list-style-type: none"> • Acquisitions • Corrective Actions (e.g. Deeds, Transfer Jurisdiction) • Designated Areas • Exchanges • Grants (e.g. State Grants) • Land Disposals (e.g. Homestead & Desert Land Entry) • Land Sales • Mineral Patents • Pending Exchanges • Public Law 167 • Withdrawals & Classifications <p>Note: Case Groups 39, and 82 in progress</p>
<p>Range Allotments</p> <p>Map service: www.geocommunicator.gov</p>	<ul style="list-style-type: none"> • Allotment boundaries • Pasture boundaries <p>Access to the Allotment Master Report from the Range</p>

Service Name: BLM_RANGELAND_wms	Authorization System (RAS).
<i>NILS' GeoCommunicator – www.geocommunicator.gov</i> <i>BLM Data Themes</i>	
Surface Management Agency Map service: www.geocommunicator.gov Map Name: BLM_MAP_SURFACE_MGT_AGY	Boundaries of all federal surface management agencies in the U.S.
Admin. Boundaries Map service: www.geocommunicator.gov Service Name: BLM_MAP_BASE_MAPS	BLM Administrative Boundaries Counties States U.S. Forest Service Boundaries Urban Areas
EPCA Basin Study Data Themes BLM_MAP_OIL_AND_GAS	<ul style="list-style-type: none"> • Gas Density • Liquid Density • Oil & Gas Basin Study Areas
<i>NILS' GeoCommunicator – www.geocommunicator.gov</i> <i>Additional Reference Themes</i>	
GeoCommunicator provides reference themes streamed from other Data Providers for viewing with BLM data sets	<ul style="list-style-type: none"> • Color Shaded Relief • County Boundaries • Digital Raster Graphics (DRG's) – topographic maps • Digital Ortho Quads (DOQ's) - imagery • Lakes • Major Roads & Highways • National Forest Boundaries • PLSS Principal Meridians • Rivers • Roads • State Boundaries • Urban Areas
<i>Additional NILS GeoCommunicator Tools</i>	
Land Survey Information - Geocoder	Geocoder allows for the conversion of Latitude and Longitude (Lat/Long) values into Township, Range, and Section values. Likewise, Township, Range, and Section values can be converted into polygon centroids in Lat/Long format.