

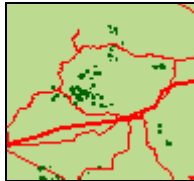


Instructions for using the GeoCommunicator Map Viewer to view USFS parcels that are potentially eligible for sale under the Rural Schools initiative.

Map Viewer Requirements:

The viewer works best in **Internet Explorer**. **Pop-ups must be allowed.**

Map URL: <http://www.geocommunicator.gov/NILS-PARCEL2/map.jsp?MAP=USFS>



The darker green areas on the map represent the potential sale parcels.

Use the map tools to move around the map



Full Extent

To see the entire US click the **Full Extent** Button.



Pan

Use the **Pan** Button to move around on the map.

Search the Eastern States or Western States using the Zoom Tool



Zoom In

Click-hold-drag a box

Click the **Zoom In** button on the tool bar. Click on the map, hold down the mouse button, and drag a box around an area you want to view. Look for the dark green dots on the maps. The closer you zoom in the more detail becomes available.

Search for a parcel using the USFS Selection Tool



USFS Search

Zoom to State

Zoom to Forest

Zoom to parcel

USFS Rural Schools - Parcel Search

These USFS parcels are potentially eligible for sale under the Rural Schools initiative. Zoom to State, Forest, and also search for Parcels by Forest.

Zoom to State: Missouri

Zoom to Forest: Mark Twain National Forest

Search Clear

Number of parcels found: 1388

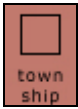
Zoom to	Select	Forest	Township	Section	Description	Acres	County	Region	Meridian	Meridian Name
ES000	<input type="checkbox"/>	Mark Twain National Forest	MO 05 T023N R025W	2		0.00001412913661	Barry	9	05	Fifth
ES000	<input type="checkbox"/>	Mark Twain National Forest	MO 05 T024N R003W	2		0.000004656550145	Oregon	9	05	Fifth
ES000	<input type="checkbox"/>	Mark Twain National Forest	MO 05 T024N R003W	2		0.000000071515485	Oregon	9	05	Fifth
ES000	<input type="checkbox"/>	Mark Twain National Forest	MO 05 T024N R003W	2		0.00000028280565	Oregon	9	05	Fifth
ES000	<input type="checkbox"/>	Mark Twain National Forest	MO 05 T024N R003W	2		0.00000006730785	Oregon	9	05	Fifth
ES000	<input type="checkbox"/>	Mark Twain National Forest	MO 05 T024N R003W	2		0.000006993988655	Oregon	9	05	Fifth

Click on the **USFS Search** tool to bring up the Search window.

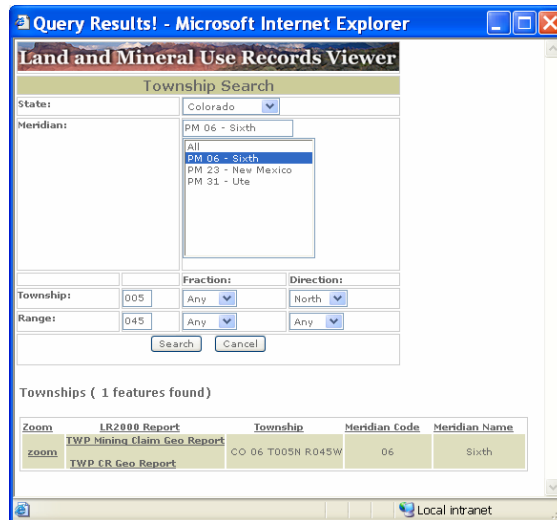
Select a state and forest, click search.

From the search results, click in the 'select box' and click **Zoom** to highlight and go to the parcel on the map.

Search the Western States using the Township Search Tool



Township Search



Search the Western States using the **Township Search** Button. Enter the State, Meridian, Township, and Range information from the USFS website.

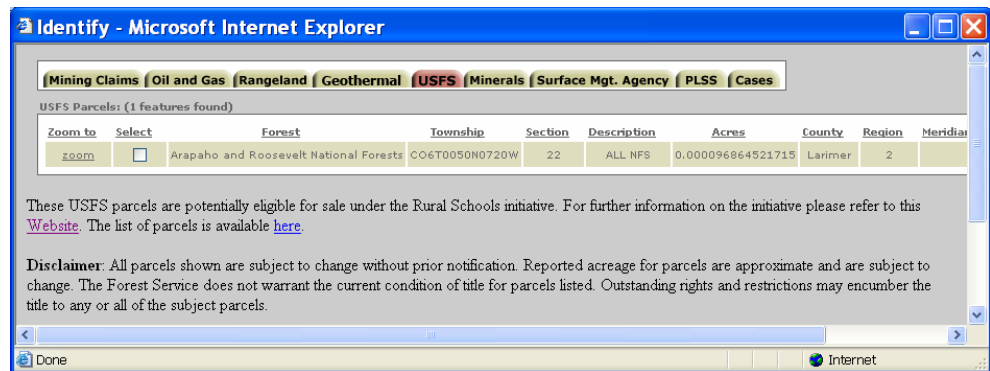
From the search results, click on **Zoom** to go to the selected area.

Verify the parcels using the Identify tool



Identify

Use the Identify tool to verify the parcel's legal description or the parcel number.



Click on the **Identify** button and then click on a USFS sale parcel on the map. The USFS location data is located under the USFS tab in the Identify window. The other tabs are used for the other GeoCommunicator products.

Print the Map

Print your maps in PDF.

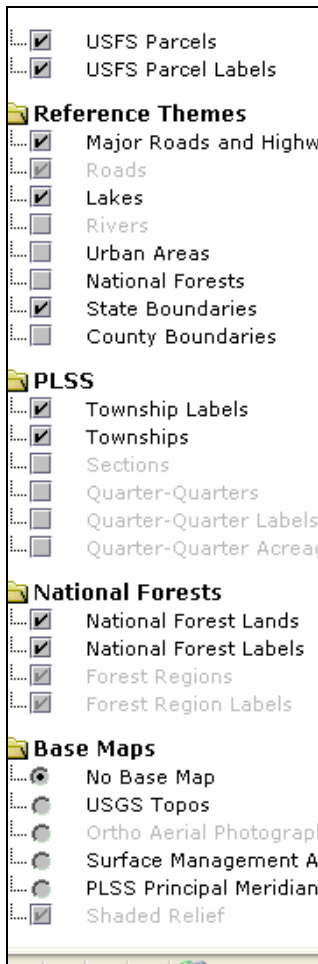


Print

Map Layers – add other data to locate where you are and for making maps

Map Layers

Use the Map Layers to customize the map and to help you orient where you are. A check mark indicates the layer is active. A **bold** layer name means the layer is active at the current map scale. A light gray color means the layer is inactive at this scale. Zooming in/out will activate or deactivate layers. Click on the folder to open/close viewing of the contents.



USFS Parcels and Labels

This is the layer that contains the sale parcels. Make sure they have a check mark to activate them on the map.

Reference Themes

Click on and off reference themes such as lakes, roads, and boundaries.

PLSS

Click in the box to activate additional layers for the Township/Range/Section information for the western states.

National Forests

If you do not wish to view the Forest Regions and labels, click the check marks next to the layers to remove them. Now only the individual forests will be displayed. As you zoom in the Regions will disappear automatically.

Base Maps

Click on and off base maps for reference. The Aerial Photography is only active when you are zoomed in. Aerial photography, USGS topo maps, and shaded relief are being streamed live to GeoCommunicator from other data providers. We have no control over the map services from these sites which may be down or unavailable at certain times.

Internet Map Service



Add Services

Use the Add Services or Add Data button from GIS software or GIS map viewers to add the USFS layer to your GIS.

Internet Map Server: www.geocommunicator.gov
 Map Service Name: BLM_USFS_PARCELS_wms

Geodata.gov

View USFS potential sale parcels using the Geodata.gov map viewer. Click on the Geodata.gov link to bring up the viewer with the sale parcels. Click on and off the layers you wish to view. Zoom in and out to see the parcels. Geodata is using the Internet Map Service (BLM_USFS_PARCELS_wms) along with additional map layers.